



DANIEL HARRMS  
COSMIC

# DANIEL HARMS COSMIC

In 2020, Daniel Harms first opened access to a world beyond familiar orders with his drawing series „*Strange Days*“. With „*Cosmic*“, he continues this path — and deepens it.

In more than 20 new drawings, the visual vocabulary condenses into a dark, complex vision: reduced to black and white, marked by coarse linework, tissue-like landscapes, and figures that no longer submit to any known sense of time or familiar laws of nature.

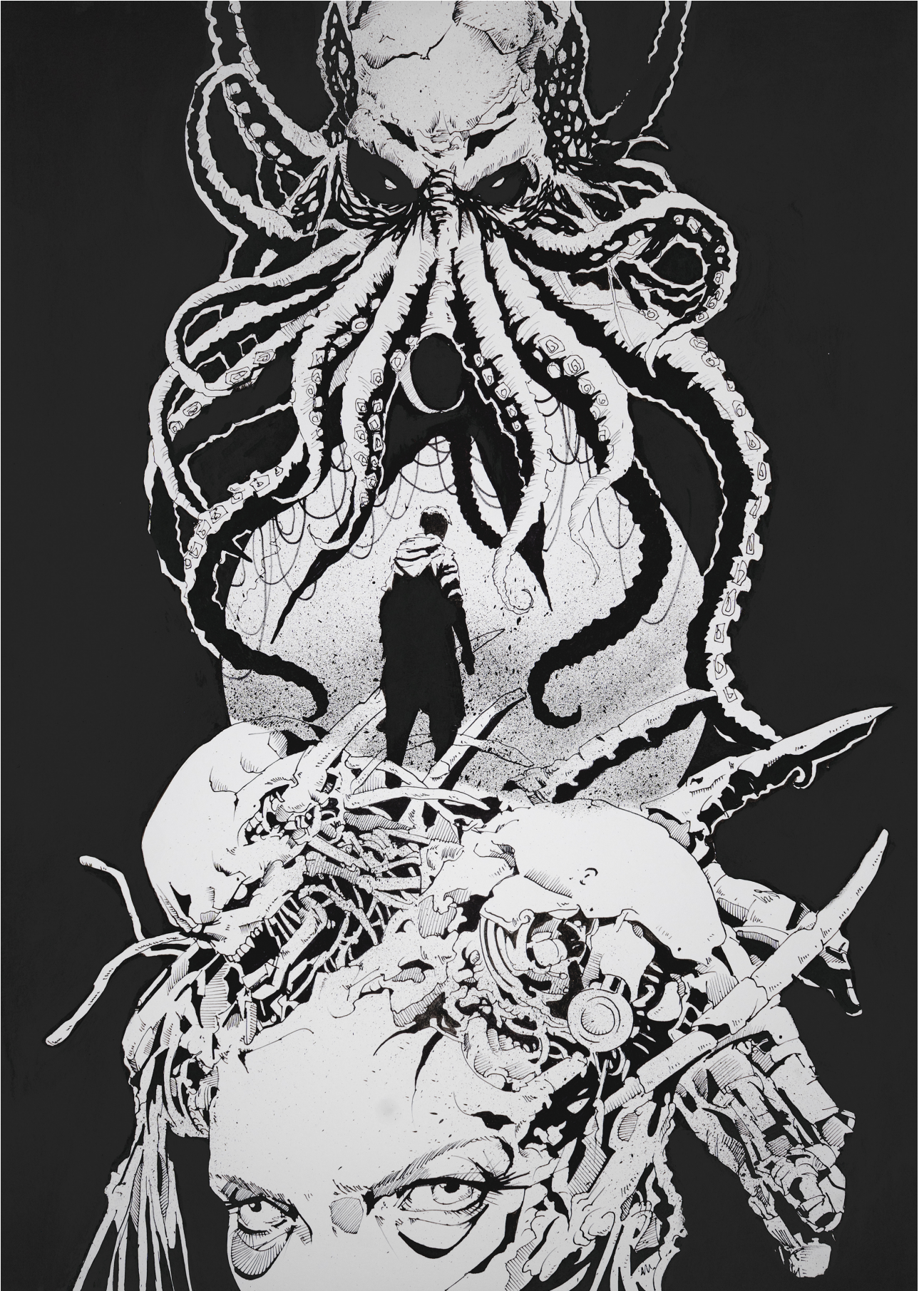
Strongly influenced by the literature of H. P. Lovecraft — from „*The Call of Cthulhu*“ and „*At the Mountains of Madness*“ to „*The Colour Out of Space*“ and „*The Dunwich Horror*“ — as well as ancient rituals and the ongoing process of modern digitalization, these works move between archaic narratives and contemporary anxieties.

Past and present dissolve into an indeterminate time frame, suggesting that these visions could belong to any era — or to none at all. The evolved mind, driven by optimization and constant restlessness, becomes a risk in itself. Dreams turn into mantras, dream journeys into harbingers of apocalyptic change. Like failing fascia (symptoms that Daniel currently had problems with), the fabric of reality disintegrates from within, forming a new and unfamiliar order.

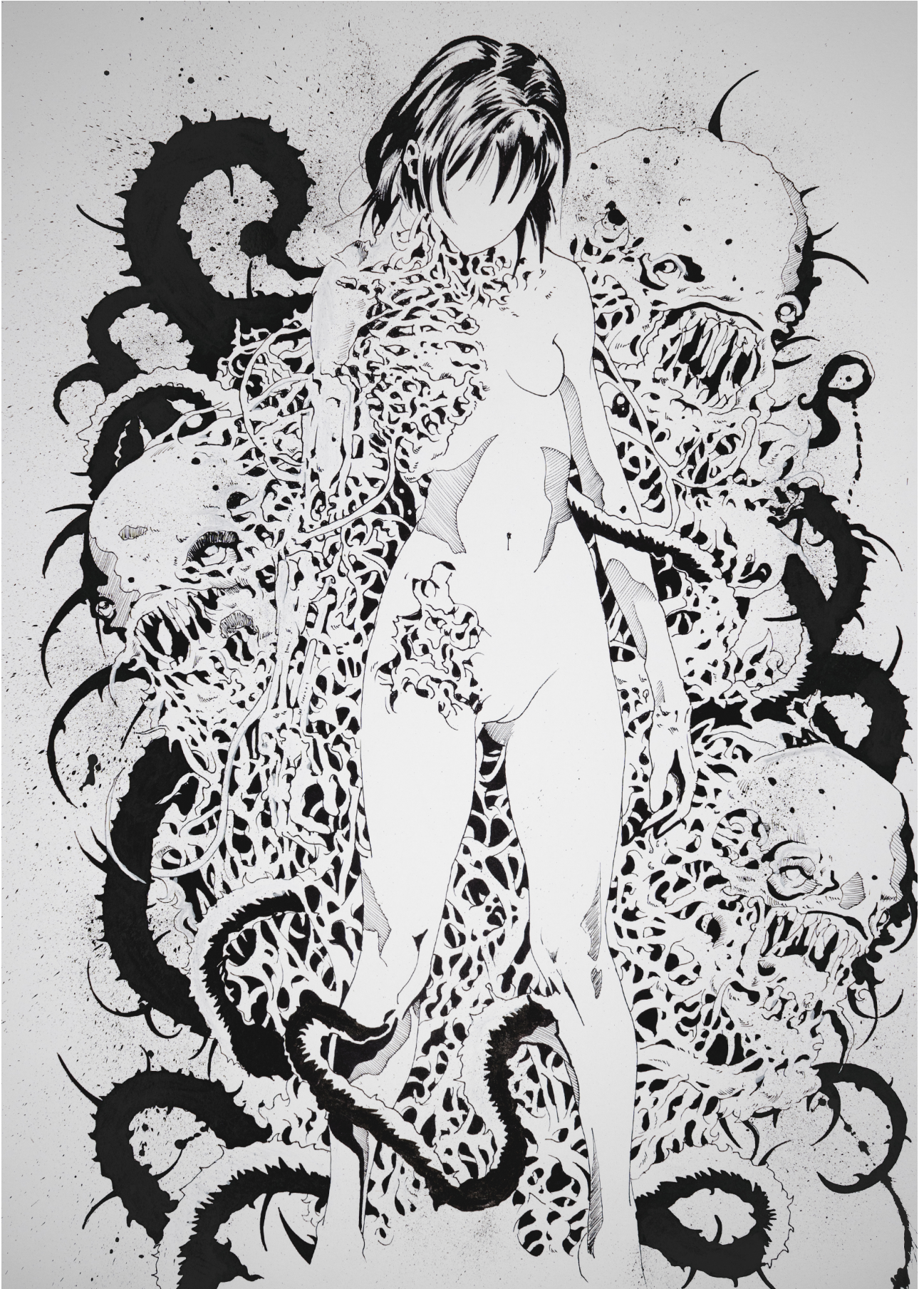
These images are not a warning, but a passage. A glimpse into the beginning of another reality. We live on a peaceful island of ignorance, surrounded by black seas of infinity — and yet the gaze has already begun to travel.









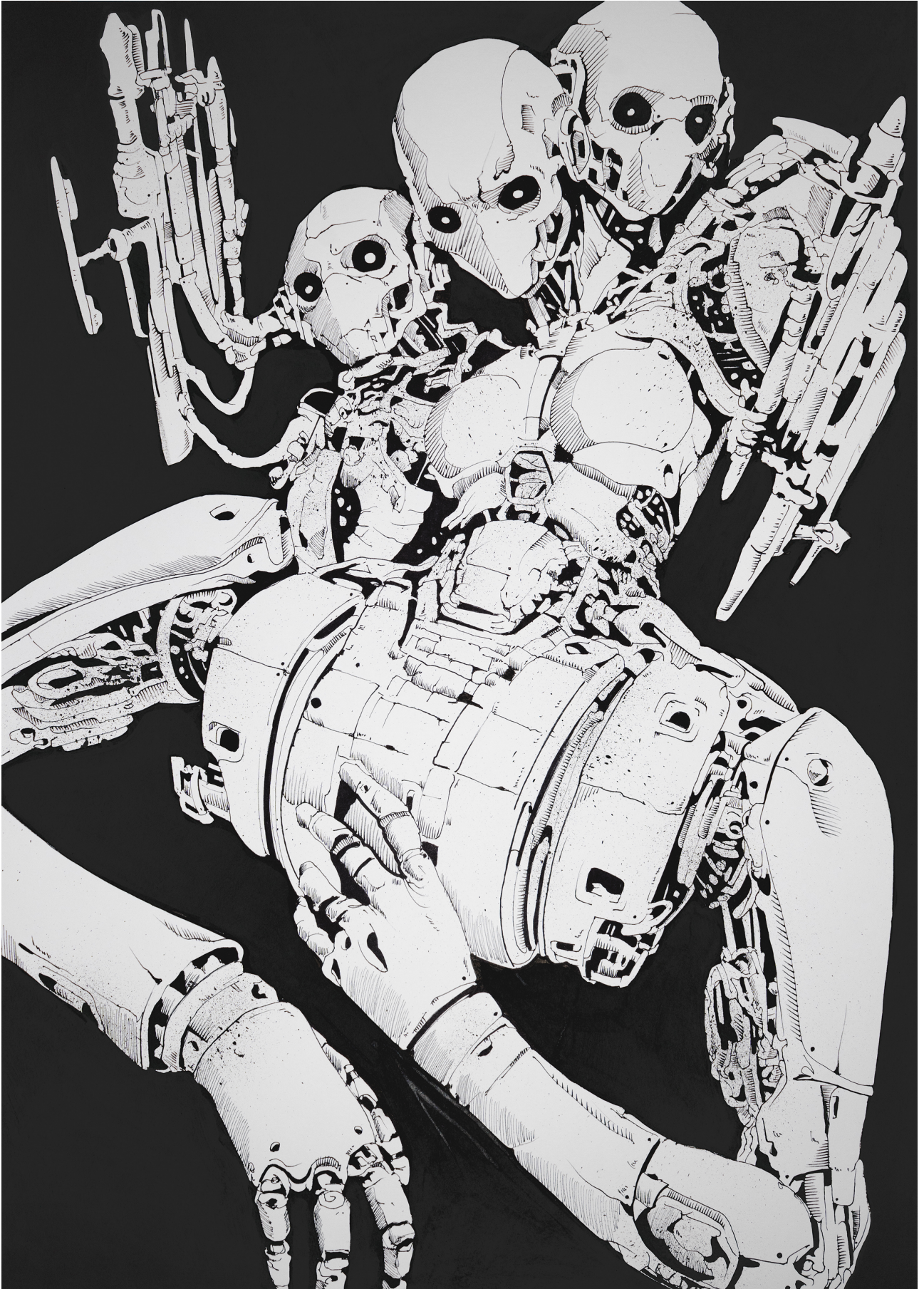






















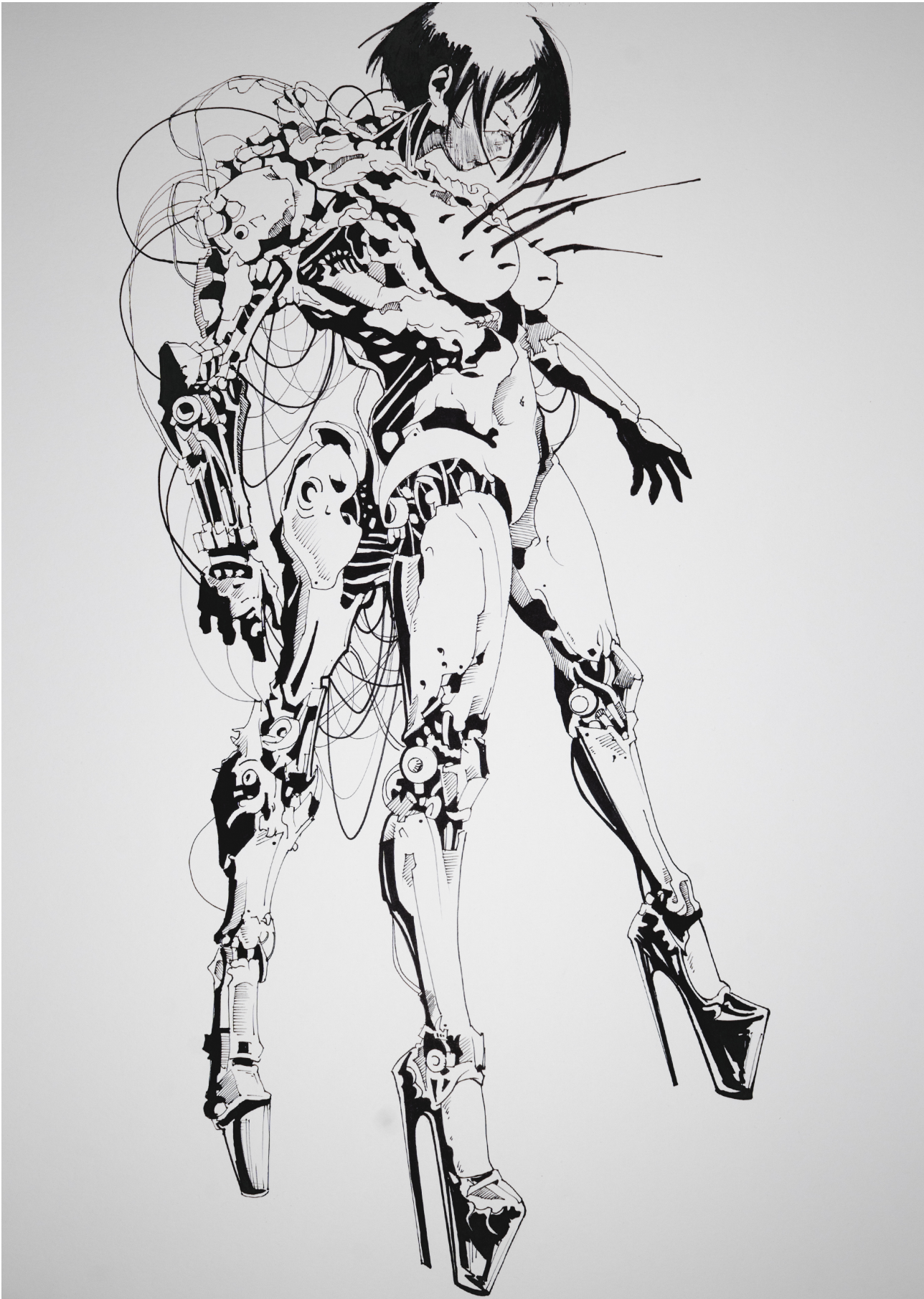








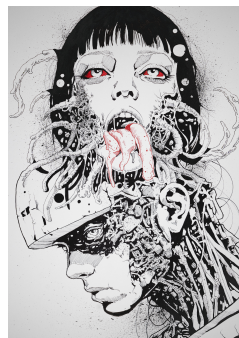
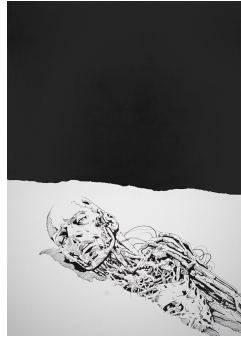
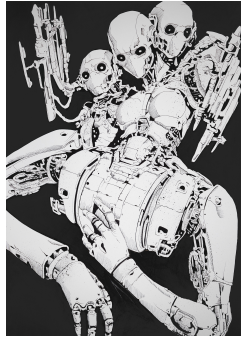
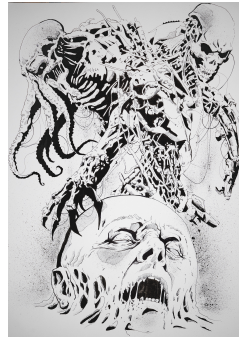
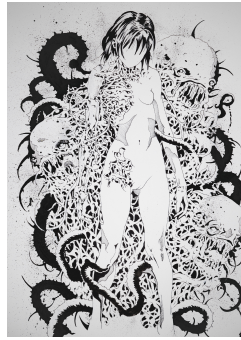












**Drawings:**

**Medium:** Acrylic Pen and brush on paper

**Size:** 50x70cm

**Year:** 2026



# DANIEL HARMS

born in Hamburg on October 7, 1980, is a Berlin-based artist known for his captivating large scale concept art paintings.

Drawing inspiration from his personal experiences and other themes, he explores worlds of alienation and connection in his work. Through the power of exaggeration, Harms enhances reality, creating thought-provoking pieces.

Harms' distinct style is characterized by vibrant colors, strong lines, abstract shapes and depicts characters in settings that transcend time and space.

Having exhibited globally in museums, galleries, and art fairs, Harms has shared the walls with renowned artists like Gerhard Richter, Georg Baselitz, Markus Lüpertz, A.R. Penk, Jonathan Meese, and others.

His talents have also extended to collaborations with companies such as SHURE and involvement with charity organizations like "Telefonseelsorge Deutschland."

In addition to his skills as a painter, Harms is a versatile artist, engaging in photography, music, and movie/video making.  
Daniel Harms lives and works in Berlin.

